



BPS News Sheet

www.coastalfederation.com | @CoastalFed | office-bacton@coastalfederation.com | 01692 650240
Annie Edwards - chairofgovs@coastalfederation.com

No.24
04.05.18



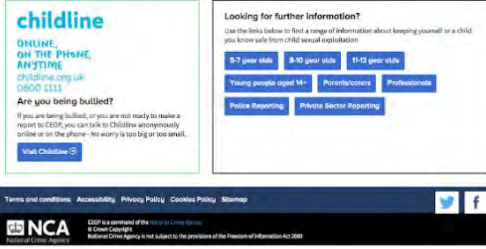


'together we are stronger'

Another busy week 'Growing together'



Important Child Safeguarding Information

| | | |
|---|--|--|
|  |  |  |
| 1 | 2 | 3 |
| <p>At the top of each school's landing page you will see this 'Click CEOP' button which will lead you to step 2</p> | <p>Once you have clicked the button at the top of the page, you will see a confidential reporting system, should you have any concerns regarding a child's safety online. If you scroll down the page you'll get to step 3</p> | <p>There is a wealth of child-friendly advice for staying safe online which is age appropriate - perfectly OK for your child to watch and use with you present, to help explain the important messages</p> |

The National Crime Agency is a Government organisation set up to tackle all sorts of crime - in this particular case the exploitation of children online. As a parent there can sometimes feel like a minefield of conflicting information about keeping your child safe online - this really is a one-stop shop.

Fortnite

The game of the moment for playstation and xbox fans appears to be Fortnite. The NSPCC has issued a warning to parents regarding the game to make them aware that children can be contacted by anyone else who is playing the game at the sametime using the messaging function which could put children at risk. Further advice can be found by following the link:

<http://www.bbc.co.uk/news/technology-43988210>

'together aspire, together achieve, together we are stronger...'



Cookery Club

On Monday our young chefs with the support of Mrs Murphy the school cook made delicious fruit kebabs and fruit smoothies. The results as you can see looked mouth watering and it's little wonder the children were so happy with what they had produced. I can only imagine how good they must have tasted.

I wonder what's on the menu for the week after next!



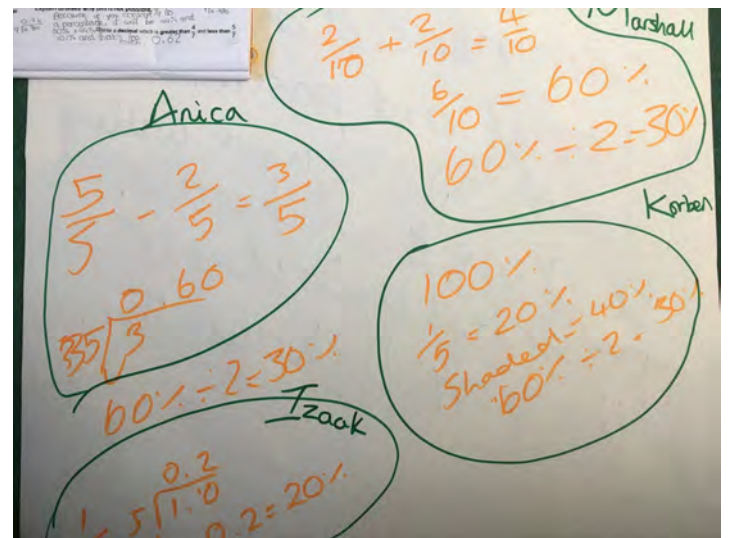
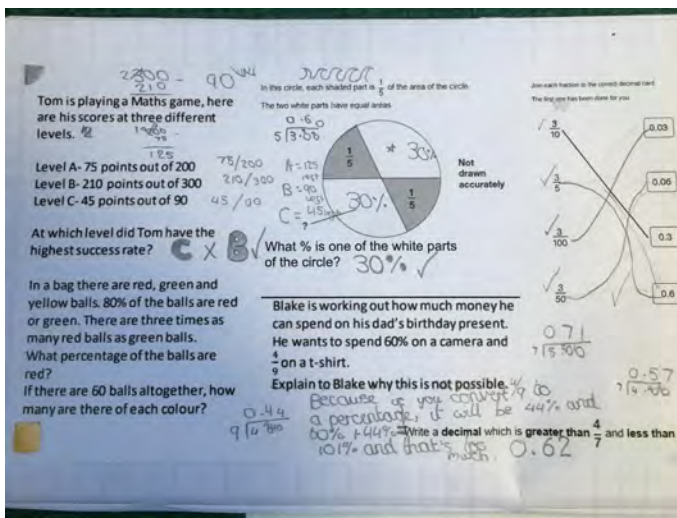
Dolphin Class

In Dolphin class this week we have been recreating the sound of a storm in preparation for our descriptive writing. We used percussion instruments to compose a small piece and we then added movements. Luckily the weather allowed us to feel the strength of a possible storm despite Dolphins feeling a little chilly out on the playground. All in all a very creative week.

School Lunch

Friday's lunch proved to be a real hit with the children. They were very excited by the salad bar and waited patiently to serve themselves to a selection from rice salad, pasta salad, potato salad, bell pepper slices, cucumber, cherry tomatoes, croutons, apple and nachos to accompany their pizza. The true test is of course empty plates and there were many, many of those. Delicious!





Shark Class

In Shark class we have been reasoning with fractions, decimals and percentages. We have learnt how to convert between these and make equivalent values. The pictures above show how four of our year 6 Sharks approached some of the reasoning problems. It is fantastic to see our children confidently tackling and explaining problems in different ways.

Our next story cafe

Our next story cafe will be a little different to our normal events. We will be combining maths and story by telling a maths story followed by maths workshops in class where you can work alongside your child and of course it wouldn't be a cafe event without a selection of scrumptious cakes. Join us 22.5.18 @ 14:00-15:10 Hope you can make it!



Seahorse Class

In Seahorse class this week we have carried on learning about plants in science and naming the parts of plants.

Reception have been helping Charlie to get Lola to eat her vegetables and other food that she says she does not like. They also talked about food they didn't like.

We have all enjoyed using our outdoor area, especially the new stage.



Teamwork, sharing, fun, fun and more fun!

On Tuesday there was great excitement on the playground when the new equipment to keep us fit and healthy was given out. The scooters have been a particular hit with each year group getting the chance to use them on a rota basis. The team skis created opportunities for focused cooperation as did the ball skips.

MUFTI DAY

Mufti Day

Friday 18th May will be Mufti day. Donations of bottles are requested for the PTFA summer fair bottle tombola please.



Road Crossing Patrol - Sad News, Good News

After many years standing out in all weathers crossing our children safely across the road Mrs Macdonald will be leaving her road crossing patrol role on Wednesday 16th May. We would like to say a huge thank you to her for her hardwork and dedication. It's not goodbye though as she will continue with her caretaker role. Norfolk County Council have agreed to replace her role and with this in mind Mrs Rooke will begin as our new crossing patrol member of staff on Thursday 17th May.









Defibrillator

The school has been offered the opportunity to host a defibrillator which will be accessible **at all times** to both the school community and general public. It has been funded by Shell at the gas terminal in conjunction with

Jayne Biggs from  and should be installed soon.

coastFest

This year's **Coastfest** will be held on **Gold Park** on **Saturday 30th June** in conjunction with the Soap Box Derby. Save the date and watch this space for more details.....

| | | | | | |
|---|---|---|---|---|---|
|  |  |  |  |  |  |
| Collaborative | Creative | Curious | Reflective | Resilient | Resourceful |

Dates for the Diary

| Date | Time | Event |
|------------|-----------------|--|
| 9.5.18 | 9:30-11:30 | Dolphin class swimming @ Victory in North Walsham |
| 14.5.18 | Monday-Thursday | Year 6 SATS week |
| 16.5.18 | 9:30-11:30 | Dolphin class swimming @ Victory in North Walsham |
| 18.5.18 | All day | Mufti day - Donations for the PTFA bottle tombola please |
| 23.5.18 | 9:30-11:30 | Dolphin class swimming @ Victory in North Walsham |
| 22.5.18 | 14:00-15:10 | Maths story cafe parents invited (please note this is a change of date previously advertised as 5th March) |
| 24-25.5.18 | All day | Year 5 and 6 Bruce Grove, Tottenham, London residential visit |
| 25.5.18 | 15:10 | Break up for half term holiday |
| 4.6.18 | 8:50 | Return from half term break |
| 4.6.18 | All week | Health Week |
| 6.6.18 | 9:30-11:30 | Dolphin class swimming @ Victory in North Walsham |
| 8.6.18 | 11:00-15:05 | Orienteering workshops with Adrian Hall on school site |
| 8.6.18 | All day | Mufti day - Donations for the PTFA sweet or toy tombolas please |
| 13.6.18 | 9:30-11:30 | Dolphin class swimming @ Victory in North Walsham |
| 14.6.18 | 18:00 | New Reception intake parent meeting |
| 14-15.6.18 | All day | Year 5 and 6 Year 6 children to Mundesley Junior for Bruce Grove visit |

'together aspire, together achieve, together we are stronger...'

| | | |
|------------|-------------|---|
| 18-20.6.18 | 9:00-12:00 | Year 6 Anti Bullying workshops at Mundesley Junior School |
| 18.6.18 | 13:15-15:00 | RNLI workshops in school |
| 20.6.18 | 9:30-11:30 | Dolphin class swimming @ Victory in North Walsham |
| 25.6.18 | All Day | Year 6 High school transition day - North Walsham High School |
| 26.6.18 | All Day | Year 6 High school transition day - North Walsham High School |
| 27.6.18 | 9:30-11:30 | Dolphin class swimming @ Victory in North Walsham |
| 27.6.18 | pm | Year 5 and 6 Careers in engineering workshops |
| 3.7.18 | 9:00-12:00 | Whole school move up morning + new Reception intake in school |
| 4.7.18 | 9:30-11:30 | Dolphin class swimming @ Victory in North Walsham |
| 11.7.18 | 9:30-11:30 | Dolphin class swimming @ Victory in North Walsham |
| 11.7.18 | 13:30-15:00 | Sports day - parents welcome |
| 12.7.18 | 13:30-15:00 | Reserve Sports day date if wet weather on 11.7.18 |
| 17.6.18 | 9:30-11:30 | Dolphin class swimming @ Victory in North Walsham |

We're here to help.



Barbara and Boo

Family Support Team

Barbara and Boo (Family Support Team) are up and running! Boo is now offering a 'drop in' for parents and carers at the following times:

Mondays 8:30-9:30am (MJS)

Thursdays 8:30-9:30am (MIS)

Fridays 8:30-9:30am (BPS)

We can also be contacted by phone (01263 720401 Ext. 5) - please leave a message if we are not available and we will return your call as soon as possible.

Support for children is also being offered and, as well as individual slots, a 'drop in' for children is available too.

We are here to help

[More info on the websites](#)

This weeks house point totals / This academic years house point total



This week 62

Total 1954



This week 86

Total 2168



This week 83

Total 1921

'together aspire, together achieve, together we are stronger...'

School Clubs

| Day | Club | Maximum club size | Time |
|-----------|---|-------------------------------------|--|
| Monday | Lego Club | For years 1-6 | 3:15-4:00 Now Running |
| Monday | Gardening | For Years R-3 Strictly 10 spaces | 3:15-4:00 Now Running |
| Monday | Healthy Lifestyles - Cookery Club | For years 2-6 Strictly 10 spaces | 3:15-4:30 Now Running |
| Tuesday | Homework club | For years 2-6 | 3:15-4:00 Now Running |
| Wednesday | Cricket Provided by Premier Sports | For Years R-6 | 3:15-4:15 Now Running |
| Thursday | Karate Club | For Years 2-6 | Now Ended |

Attendance

Attendance target set by the government = 96.1%

Current updated Bacton Primary School attendance = 96.48%

(To the end of this week 04/05/2018)

We have 69 on roll and there are currently 56 children with 100% attendance.

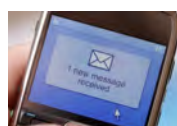
The class with the highest attendance this week was **Dolphin class** with **100%** attendance

Well done Dolphin Class!



The Kindle's back!

Will you be the winner at the end of the Summer term?
Be in school everyday this term to be in with a chance to
win.



Have you received one yet? - If your child has 100% attendance during the week we will be texting you to congratulate them. Look out for your message!

This calendar applies to community schools, community special schools, VC schools and nursery schools and sets the days on which school transport will be provided. While most Foundation, VA, foundation special, free schools and academy trusts who are able to set their own dates, adopt the Norfolk Model, we advise you to check with your child's school before making holiday or other commitments.

| September 2017 | | | | | | | October 2017 | | | | | | | November 2017 | | | | | | | December 2017 | | | | | | |
|----------------|----|----|----|----|----|----|--------------|----|----|----|----|----|----|---------------|----|----|----|----|----|----|---------------|----|----|----|----|----|----|
| M | T | W | T | F | S | S | M | T | W | T | F | S | S | M | T | W | T | F | S | S | M | T | W | T | F | S | S |
| | | | | 1 | 2 | 3 | | | | | | | 1 | | | 1 | 2 | 3 | 4 | 5 | | | | | 1 | 2 | 3 |
| 4 | 5 | 6 | 7 | 8 | 9 | 10 | 2 | 3 | 4 | 5 | 6 | 7 | 8 | 6 | 7 | 8 | 9 | 10 | 11 | 12 | 4 | 5 | 6 | 7 | 8 | 9 | 10 |
| 11 | 12 | 13 | 14 | 15 | 16 | 17 | 9 | 10 | 11 | 12 | 13 | 14 | 15 | 13 | 14 | 15 | 16 | 17 | 18 | 19 | 11 | 12 | 13 | 14 | 15 | 16 | 17 |
| 18 | 19 | 20 | 21 | 22 | 23 | 24 | 16 | 17 | 18 | 19 | 20 | 21 | 22 | 20 | 21 | 22 | 23 | 24 | 25 | 26 | 18 | 19 | 20 | 21 | 22 | 23 | 24 |
| 25 | 26 | 27 | 28 | 29 | 30 | | 23 | 24 | 25 | 26 | 27 | 28 | 29 | 27 | 28 | 29 | 30 | | | | 25 | 26 | 27 | 28 | 29 | 30 | 31 |
| | | | | | | | 30 | 31 | | | | | | | | | | | | | | | | | | | |

| January 2018 | | | | | | | February 2018 | | | | | | | March 2018 | | | | | | | April 2018 | | | | | | |
|--------------|----|----|----|----|----|----|---------------|----|----|----|----|----|----|------------|----|----|----|----|----|----|------------|----|----|----|----|----|----|
| M | T | W | T | F | S | S | M | T | W | T | F | S | S | M | T | W | T | F | S | S | M | T | W | T | F | S | S |
| 1 | 2 | 3 | 4 | 5 | 6 | 7 | | | | 1 | 2 | 3 | 4 | | | | 1 | 2 | 3 | 4 | | | | | | | 1 |
| 8 | 9 | 10 | 11 | 12 | 13 | 14 | 5 | 6 | 7 | 8 | 9 | 10 | 11 | 5 | 6 | 7 | 8 | 9 | 10 | 11 | 2 | 3 | 4 | 5 | 6 | 7 | 8 |
| 15 | 16 | 17 | 18 | 19 | 20 | 21 | 12 | 13 | 14 | 15 | 16 | 17 | 18 | 12 | 13 | 14 | 15 | 16 | 17 | 18 | 9 | 10 | 11 | 12 | 13 | 14 | 15 |
| 22 | 23 | 24 | 25 | 26 | 27 | 28 | 19 | 20 | 21 | 22 | 23 | 24 | 25 | 19 | 20 | 21 | 22 | 23 | 24 | 25 | 16 | 17 | 18 | 19 | 20 | 21 | 22 |
| 29 | 30 | 31 | | | | | 26 | 27 | 28 | | | | | 26 | 27 | 28 | 29 | 30 | 31 | 23 | 24 | 25 | 26 | 27 | 28 | 29 | |
| | | | | | | | | | | | | | | | | | | | | | 30 | | | | | | |

| May 2018 | | | | | | | June 2018 | | | | | | | July 2018 | | | | | | | August 2018 | | | | | | |
|----------|----|----|----|----|----|----|-----------|----|----|----|----|----|----|-----------|----|----|----|----|----|----|-------------|----|----|----|----|----|----|
| M | T | W | T | F | S | S | M | T | W | T | F | S | S | M | T | W | T | F | S | S | M | T | W | T | F | S | S |
| | 1 | 2 | 3 | 4 | 5 | 6 | | | | | 1 | 2 | 3 | | | | | | | 1 | | | 1 | 2 | 3 | 4 | 5 |
| 7 | 8 | 9 | 10 | 11 | 12 | 13 | 4 | 5 | 6 | 7 | 8 | 9 | 10 | 2 | 3 | 4 | 5 | 6 | 7 | 8 | 6 | 7 | 8 | 9 | 10 | 11 | 12 |
| 14 | 15 | 16 | 17 | 18 | 19 | 20 | 11 | 12 | 13 | 14 | 15 | 16 | 17 | 9 | 10 | 11 | 12 | 13 | 14 | 15 | 13 | 14 | 15 | 16 | 17 | 18 | 19 |
| 21 | 22 | 23 | 24 | 25 | 26 | 27 | 18 | 19 | 20 | 21 | 22 | 23 | 24 | 16 | 17 | 18 | 19 | 20 | 21 | 22 | 20 | 21 | 22 | 23 | 24 | 25 | 26 |
| 28 | 29 | 30 | 31 | | | | 25 | 26 | 27 | 28 | 29 | 30 | | 23 | 24 | 25 | 26 | 27 | 28 | 29 | 27 | 28 | 29 | 30 | 31 | | |
| | | | | | | | | | | | | | | 30 | 31 | | | | | | | | | | | | |

PLEASE ensure that all holidays are taken during the designated holiday time.

